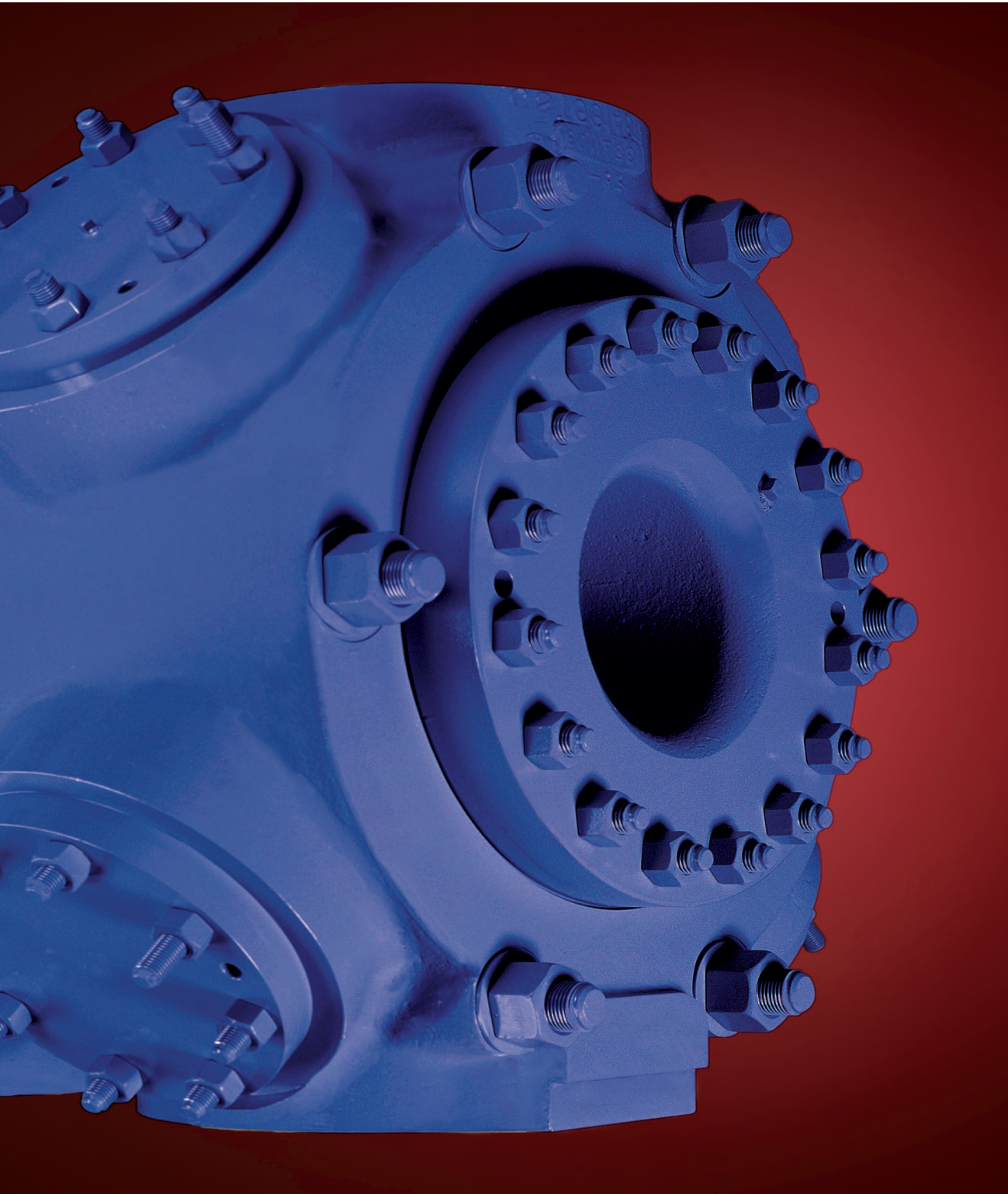


## BOS COMPRESSORS



YOUR AUTHORIZED PACKAGER

**COBEY**<sup>®</sup>

ONE SHIP CANAL PARKWAY • BUFFALO, NY 14218  
PH: +1.716.362.9550 • WWW.COBEY.COM

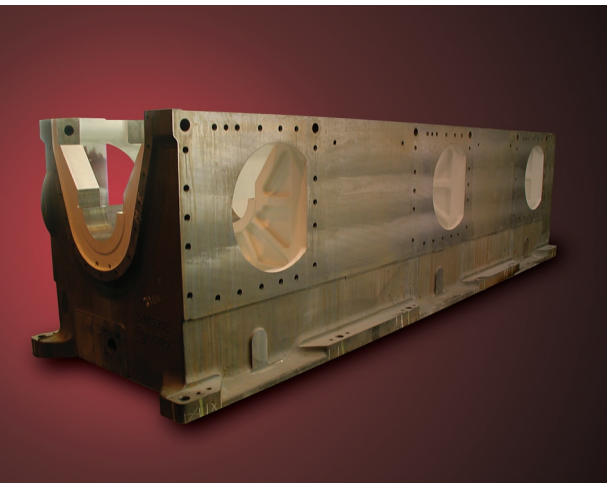
**DRESSER-RAND**<sup>®</sup>

Listening. Innovating. Delivering.

# BOS

## compressors

*The reliable, heavy-duty,  
separable compressor.*



Rigid cast gray iron frame, heavily ribbed with bolt-on cast gray iron frame extensions with integral distance piece.

Dresser-Rand's (D-R) heavy-duty BOS (Big Oilfield Separable) compressor line takes advantage of our more than 75 years of gas transmission and refinery compressor experience to bring exceptional reliability, durability, and flexibility to higher-horsepower gas field applications. These rugged units excel at gas lifting, and gathering, gas transmission, underground gas storage, fuel gas boosting, landfill gas recovery, and many other applications. They are



Heavily ribbed rugged construction.

suited not only for sweet natural gas services, but can be built to handle sour natural gas, propane, carbon dioxide, air, nitrogen, and most other gases.

The BOS compressor design emerged from D-R's more than 20 years of experience and expertise developing compressor frames and cylinders on our closed-loop test facility, using a variety of field gases. The result is a new level of reliability and performance. With BOS compressors on the job, you can look forward to reduced maintenance, and reduced energy consumption.

BOS compressors are also flexible to meet your gas compression application needs. With a selection of innovative systems for controlling cylinder capacity, they can operate at a wide variety of pressure, and flow conditions without sacrificing efficiency.

The BOS is rated up to 11,250 hp and 1000 rpm, with design pressures to 7500 psig using "billet steel" cylinders. BOS compressors are available in two-, four- or six-throw configurations, with a 7.25" (184 mm) or 8.5" (216 mm) stroke, and cylinder bore sizes ranging from 6" (152 mm) to 32" (813 mm) in diameter. The rigid, cast gray iron frame is heavily ribbed and reinforced for long life, and includes separate, bolt-on frame extensions with integrally cast distance pieces. Several types of compressor cylinders are available to match various gas transmission, gas storage, and gathering, and high-pressure applications.

### **CUSTOM ENGINEERED TO YOUR REQUIREMENTS**

Our experienced engineers will draw on numerous configurations, and component options to develop a system that precisely matches your needs.

BOS gas-cooled compressor cylinders between 6" (152 mm), and 24" (610 mm) bore sizes, used in most gas field applications, feature a replaceable center bore section. All D-R cylinders incorporate the most advanced engineering design, and wear parts technology available today.

BOS compressors are available with water-cooled cylinders that provide additional cooling in certain higher-temperature applications. This is accomplished with a water-cooled center section.

BOS gas transmission cylinders feature large gas passages, and highly effective flow areas for optimum efficiency. They are available with a complete selection of cylinder capacity controls, all designed and built by D-R. All gas gathering and transmission cylinders are made of nodular iron. A full line of higher-pressure forged steel cylinders are also available.

BOS pistons can be either solid or hollow, aluminum or cast gray iron, depending on service conditions, balancing requirements and inertia forces. Integral steel pistons, and rods may be used for high-pressure applications.

### **ONE SOURCE FOR ALL YOUR COMPRESSION NEEDS**

D-R and its distributors can provide single-source responsibility, including engineering, manufacturing, packaging, installation, parts, and service. We back the BOS line with a network of computerized parts warehouses and service centers located throughout the U.S. and Canada.

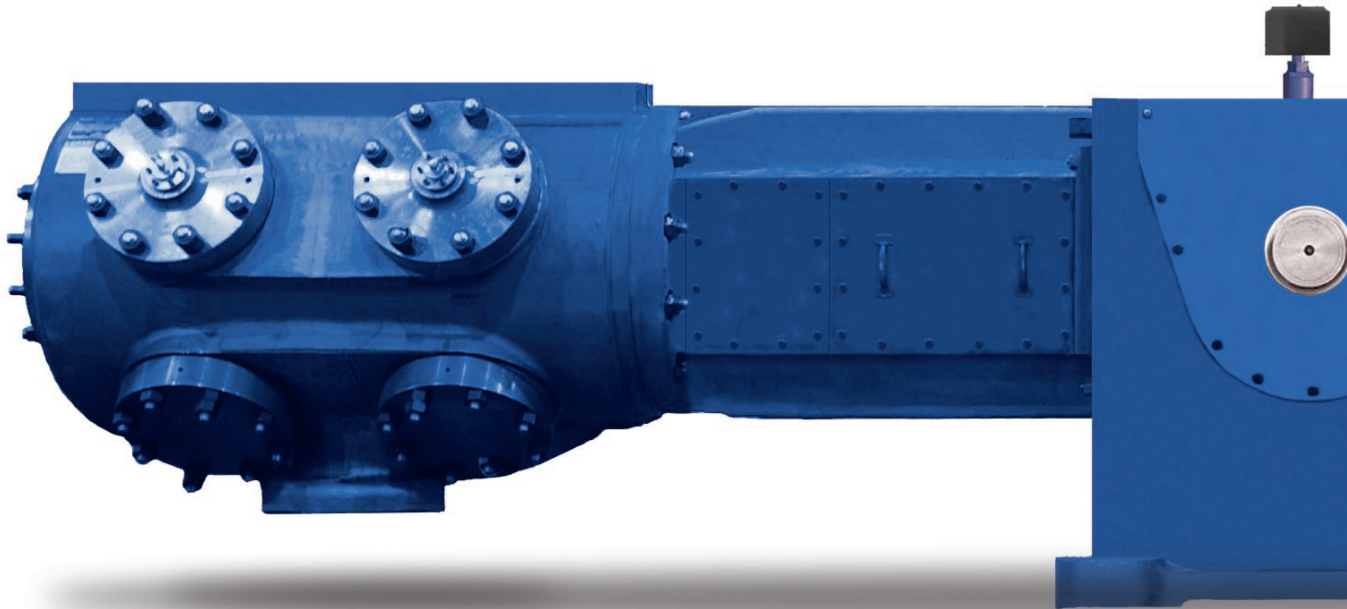
Whether used in a standard or customized package, in rental service, or purchased outright, BOS compressors will deliver the flexibility, reliability, efficiency, and long life necessary to meet your operating needs.



# Rugged design for smooth operation

The components of every BOS compressor are designed to enhance performance. The compressor frame and all cylinders are matched to provide years of reliable, efficient service. The open-top frame construction ensures rigidity while providing large access areas for maintenance and inspection.

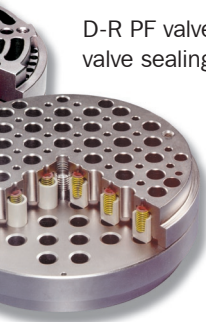
A full-length frame extension piece with oversized access doors provides easy access to running gear components, allowing for easy inspection, adjustment, or removal. Cylinder performance is enhanced by using high-efficiency valves with high effective flow areas (EFA), and ample-size gas passages to minimize losses.



High-strength, nodular iron crossheads feature shim-adjustable aluminum shoes at top, and bottom. Surface-hardened crosshead pins are full floating for optimum reliability.



# n, long life, and efficiency



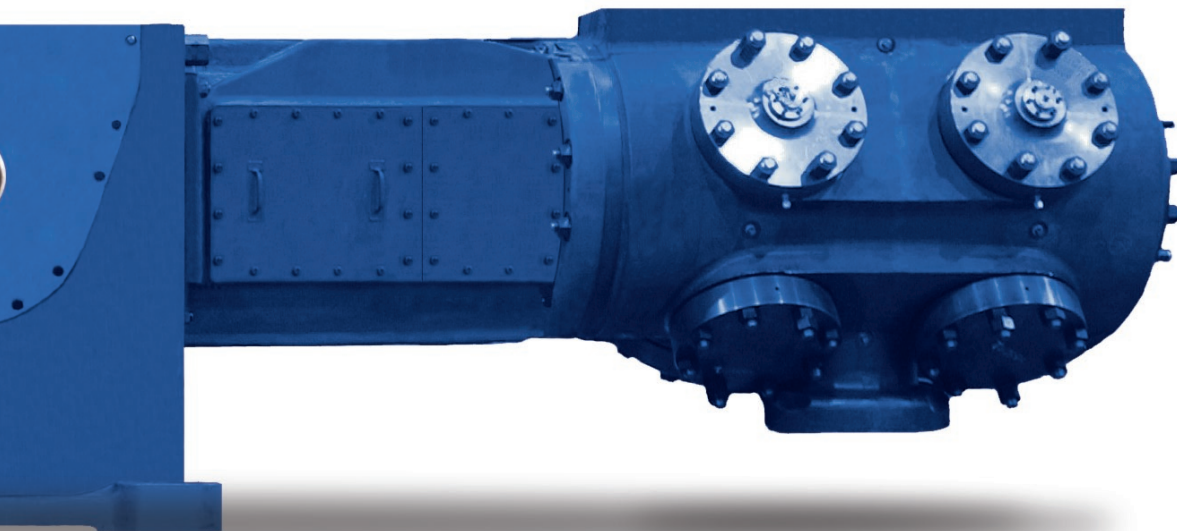
D-R PF valve (with ported valve sealing plate).

D-R Magnum™ valve (mini-poppet element).

Both valves use D-R's exclusive "Hi-Temp" nonmetallic wear parts material.



Forged steel connecting rods are rifle-drilled for pressure lubrication and feature high-strength bolts with rolled threads. Main bearings are aluminum with micro-babbitt overlay. Crankpin bearings are steel-backed aluminum tri-metal with a micro-babbitt overlay plate for embedability, and corrosion resistance. Connecting rod pin bushings are bronze with babbitt overlay.



The heavy-duty forged alloy steel crankshaft is balanced, and rifle-drilled for pressure lubrication. The crankshaft is counterweighted to reduce horizontal moments.

Induction-hardened AISI 4142 steel piston rods feature rolled threads for optimum fatigue strength. Each piston rod is wet-magnetic-particle inspected. Every piston rod thread form is inspected using Johnson gauging.



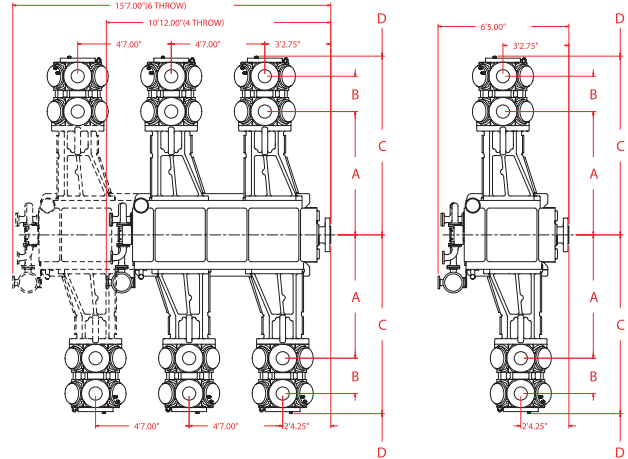
**RATINGS**

Model	Stroke in.	Number of Cylinders	Nominal Rated Power hp (kW)	Max. Allowable Operating Rod Load lbs. (kN)	Rated rpm	Approximate Gross Weight* lbs. (kg)
8.50 BOS 2	8.5	2	3650 (2722)	90,000 (400)	850	47,000 (21,319)
8.50 BOS 4	8.5	4	7300 (5444)	90,000 (400)	850	94,000 (42,638)
8.50 BOS 6	8.5	6	10,950 (8166)	90,000 (400)	850	140,000 (63,503)
7.25 BOS 2	7.25	2	3750 (2796)	90,000 (400)	1000	47,000 (21,319)
7.25 BOS 4	7.25	4	7500 (5593)	90,000 (400)	1000	94,000 (42,638)
7.25 BOS 6	7.25	6	11,250 (8389)	90,000 (400)	1000	140,000 (63,503)

\*Includes compressor frame, running gear, and cylinders.

**Specifications and Dimensions**

- Frame . . . . . One-Piece, High-Strength Cast Gray Iron
- Crankshaft . . . . . Forged Alloy Steel
- Connecting Rods . . . . . Forged Alloy Steel
- Connecting Rod Bolts . . . . . Alloy Steel, Rolled Threads
- Crossheads . . . . . Nodular Iron
- Crosshead Pins . . . . . Surface-Hardened Alloy Steel
- Bearings—Main . . . . . Solid Aluminum with Micro-Babbitt Overlay
- Bearings—Crankpin . . . . . Steel-Backed Aluminum with Micro-Babbitt Overlay
- Bearings—Connecting Rod . . . . . Bronze with Babbitt Overlay
- Frame Extension/Distance Pc . . . . . One-Piece, High-Strength Cast Gray Iron
- Cylinders . . . . . Nodular Iron, Cast Gray Iron and Steel
- Pistons . . . . . Aluminum or Cast Gray Iron
- Piston Rods . . . . . Alloy Steel with Rolled Threads
- Piston Rod Packing Rings . . . . . Glass-Filled Teflon®
- Oil Pump . . . . . Positive Displacement Gear-Type
- Oil Filter . . . . . Full-Flow, 10 Micron
- Oil Cooler . . . . . Shell-and-Tube Type



Cylinder Size in.	MAWP psig (kg/cm <sup>2</sup> )	Cylinder Displacement				A in. (mm)	B** in. (mm)	C** in. (mm)	Piston Rod Removal Clearance D in. (mm)
		7.25" Stroke cfm (m <sup>3</sup> /hr.)	Max. rpm	8.5" Stroke cfm (m <sup>3</sup> /hr.)	Max. rpm				
6	2850 (200.4)	202 (344)	1000	202 (343)	850	74 (1880)	21.25 (540)	107.5 (2731)	56.5 (1435)
7	2850 (200.4)	288 (489)	1000	287 (488)	850	74 (1880)	21.25 (540)	107.5 (2731)	56.5 (1435)
7.125	2850 (200.4)	300 (509)	1000	299 (507)	850	74 (1880)	21.25 (540)	107.5 (2731)	56.5 (1435)
8.25	2850 (200.4)	414 (703)	1000	412 (700)	850	74 (1880)	21.25 (540)	107.5 (2731)	56.5 (1435)
8.375	1935 (136.0)	427 (726)	1000	426 (723)	850	73 (1854)	22 (559)	106.5 (2705)	56 (1422)
9	1935 (136.0)	499 (847)	1000	497 (845)	850	73 (1854)	22 (559)	106.5 (2705)	56 (1422)
9.25	1935 (136.0)	529 (898)	1000	527 (895)	850	73 (1854)	22 (559)	106.5 (2705)	56 (1422)
10.5	1935 (136.0)	691 (1175)	1000	689 (1171)	850	73 (1854)	22 (559)	106.5 (2705)	56 (1422)
10.75	1520 (106.9)	726 (1234)	1000	724 (1230)	850	72.5 (1842)	22 (559)	105.125 (2670)	57.25 (1454)
11.5	1520 (106.9)	836 (1421)	1000	833 (1416)	850	72.5 (1842)	22 (559)	105.125 (2670)	57.25 (1454)
11.625	1520 (106.9)	855 (1453)	1000	852 (1448)	850	72.5 (1842)	22 (559)	105.125 (2670)	57.25 (1454)
12.25	1520 (106.9)	954 (1620)	1000	950 (1615)	850	72.5 (1842)	22 (559)	105.125 (2670)	57.25 (1454)
12.5	1290 (90.7)	994 (1690)	1000	991 (1684)	850	72.5 (1842)	22 (559)	105.125 (2670)	57.25 (1454)
13	1290 (90.7)	1078 (1832)	1000	1075 (1826)	850	72.5 (1842)	22 (559)	105.125 (2670)	57.25 (1454)
13.125	1290 (90.7)	1100 (1869)	1000	1096 (1862)	850	72.5 (1842)	22 (559)	105.125 (2670)	57.25 (1454)
13.875	1290 (90.7)	1233 (2095)	1000	1229 (2088)	850	72.5 (1842)	22 (559)	105.125 (2670)	57.25 (1454)
14	900 (63.3)	1256 (2134)	1000	1252 (2127)	850	74.25 (1886)	26.625 (676)	114.625 (2911)	58.75 (1492)
15.125	900 (63.3)	1472 (2501)	1000	1467 (2493)	850	74.25 (1886)	26.625 (676)	114.625 (2911)	58.75 (1492)
15.375	900 (63.3)	1522 (2587)	1000	1517 (2578)	850	74.25 (1886)	26.625 (676)	114.625 (2911)	58.75 (1492)
16.125	900 (63.3)	1678 (2851)	1000	1672 (2841)	850	74.25 (1886)	26.625 (676)	114.625 (2911)	58.75 (1492)
16.25	900 (63.3)	1705 (2896)	1000	1699 (2886)	850	74.25 (1886)	26.625 (676)	114.625 (2911)	58.75 (1492)
17.25	900 (63.3)	1925 (3271)	1000	1919 (3260)	850	74.25 (1886)	26.625 (676)	114.625 (2911)	58.75 (1492)
17.375	900 (63.3)	1788 (3037)	915	1787 (3036)	780	74.25 (1886)	26.625 (676)	114.625 (2911)	58.75 (1492)
18.25	900 (63.3)	1976 (3357)	915	1974 (3355)	780	74.25 (1886)	26.625 (676)	114.625 (2911)	58.75 (1492)
18.5	600 (42.2)	2031 (3451)	915	2030 (3449)	780	73.5 (1867)	22 (559)	107.25 (2724)	58 (1473)
19.25	600 (42.2)	2202 (3741)	915	2200 (3739)	780	73.5 (1867)	22 (559)	107.25 (2724)	58 (1473)
19.375	600 (42.2)	2231 (3790)	915	2229 (3788)	780	73.5 (1867)	22 (559)	107.25 (2724)	58 (1473)
20	600 (42.2)	2379 (4042)	915	2378 (4040)	780	73.5 (1867)	22 (559)	107.25 (2724)	58 (1473)
20.25	450 (31.6)	2440 (4145)	915	2438 (4143)	780	73.625 (1870)	22.25 (565)	107.5 (2731)	58 (1473)
21.375	450 (31.6)	2722 (4625)	915	2720 (4622)	780	73.625 (1870)	22.25 (565)	107.5 (2731)	58 (1473)
21.5	450 (31.6)	2754 (4680)	915	2753 (4677)	780	73.625 (1870)	22.25 (565)	107.5 (2731)	58 (1473)
22.25	450 (31.6)	2952 (5016)	915	2950 (5013)	780	73.625 (1870)	22.25 (565)	107.5 (2731)	58 (1473)
22.5	450 (31.6)	3019 (5130)	915	3018 (5127)	780	73.625 (1870)	22.25 (565)	107.5 (2731)	58 (1473)
23.25	450 (31.6)	3226 (5482)	915	3224 (5478)	780	73.625 (1870)	22.25 (565)	107.5 (2731)	58 (1473)
23.375	450 (31.6)	3261 (5541)	915	2967 (5041)	710	73.625 (1870)	22.25 (565)	107.5 (2731)	58 (1473)
24	450 (31.6)	3120 (5301)	830	3129 (5317)	710	73.625 (1870)	22.25 (565)	107.5 (2731)	58 (1473)
25.25	400 (28.1)	3457 (5873)	830	3467 (5890)	710	90 (2286)	25 (635)	115 (2921)	57.5 (1461)
26.5	400 (28.1)	3811 (6474)	830	3822 (6493)	710	90 (2286)	25 (635)	115 (2921)	57.5 (1461)
27.875	300 (21.1)	4219 (7169)	830	4232 (7190)	710	91 (2311)	25.5 (648)	116.5 (2959)	58.25 (1480)
29.5	300 (21.1)	4729 (8035)	830	4743 (8058)	710	91 (2311)	25.5 (648)	116.5 (2959)	58.25 (1480)
31	250 (17.6)	5225 (8878)	830	5240 (8904)	710	91.5 (2324)	27 (686)	118.5 (3010)	59 (1499)
32	250 (17.6)	5570 (9463)	830	5586 (9491)	710	91.5 (2324)	27 (686)	118.5 (3010)	59 (1499)

\*\*Dimensions shown apply to 7.25" stroke. For 8.5" stroke, add 1.25" to "B", and "C" dimensions.



# DRESSER-RAND®

YOUR AUTHORIZED PACKAGER

# COBEY®

ONE SHIP CANAL PARKWAY • BUFFALO, NY 14218  
PH: +1.716.362.9550 • WWW.COBEY.COM

Listening. Innovating. Delivering.

For more information on the **BOS compressor**, visit [www.dresser-rand.com/gfc](http://www.dresser-rand.com/gfc) or contact us at:

**Dresser-Rand  
Gas Field Compressors**  
1354 South Sheridan Road  
Tulsa, OK 74112-5416  
Tel: 918-835-8437  
Fax: 918-832-7046  
E-mail: [GFC@dresser-rand.com](mailto:GFC@dresser-rand.com)

**Dresser-Rand Company  
Reciprocating Operations**  
100 Chemung Street  
Painted Post, NY 14870 USA  
Phone: (607) 937-2011  
Fax: (607) 937-2905

For a complete list of products and services, visit: [www.dresser-rand.com](http://www.dresser-rand.com) or contact the following:

**Dresser-Rand  
Corporate Headquarters**  
West8 Tower, Suite 1000  
10205 Westheimer Road  
Houston, Texas 77042  
Tel: (Int'l +1) 713-354-6100  
Fax: (Int'l +1) 713-354-6110  
E-mail: [info@dresser-rand.com](mailto:info@dresser-rand.com)

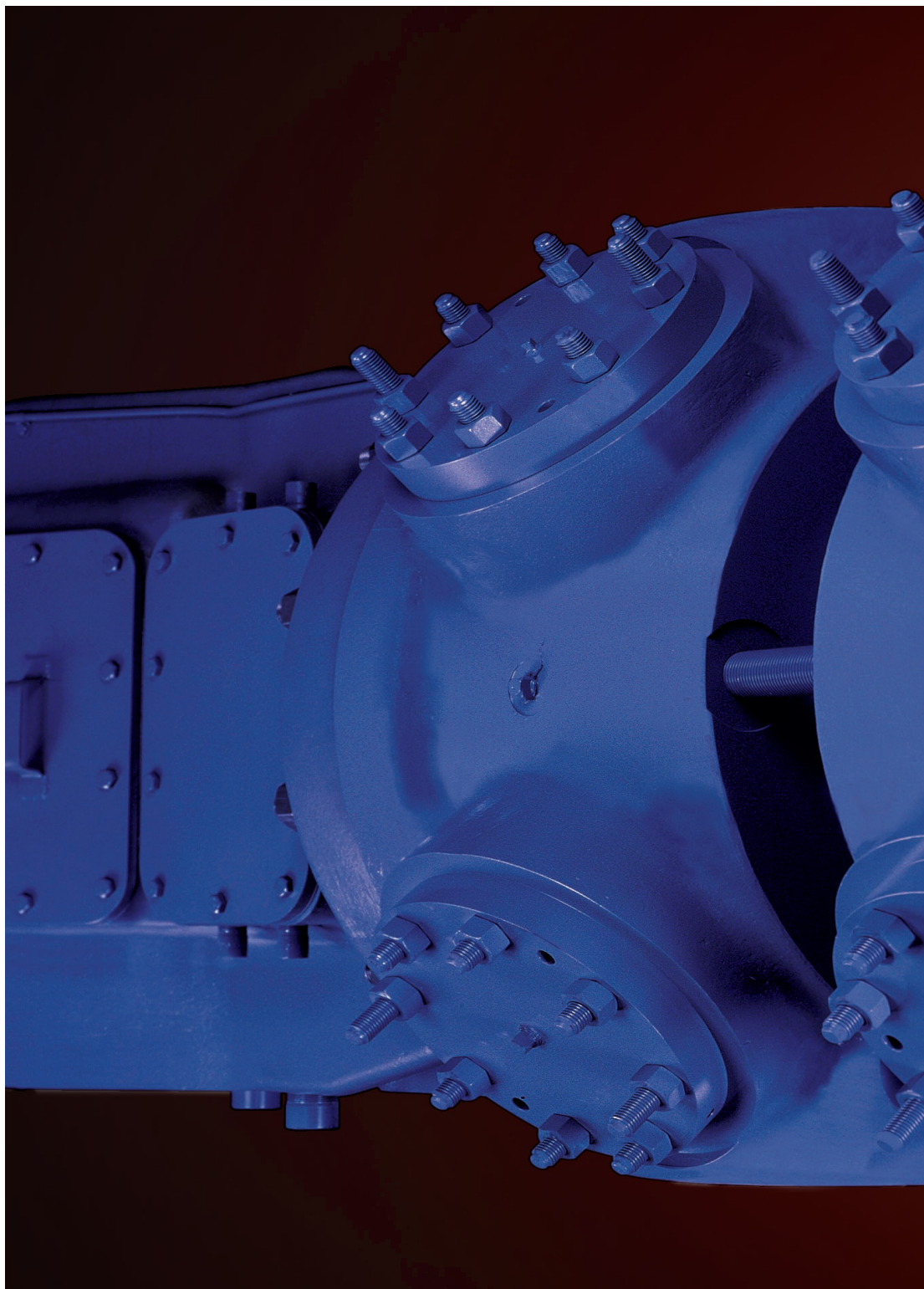
#### Regional Headquarters

**The Americas**  
West8 Tower, Suite 1000  
10205 Westheimer Road  
Houston, Texas 77042  
Tel: (Int'l +1) 713-354-6100  
Fax: (Int'l +1) 713-354-6110  
E-mail: [info@dresser-rand.com](mailto:info@dresser-rand.com)

**European Served Areas (ESA)**  
*(Europe, Eurasia, Middle East, Africa)*  
Dresser-Rand S.A.  
31 Boulevard Winston Churchill  
Cedex 7013  
Le Havre 76080, France  
Tel: (Int'l +33) 2-35-25-5225  
Fax: (Int'l +33) 2-35-25-5366/5367

**Asia-Pacific**  
Dresser-Rand Asia Pacific Sdn Bhd  
Unit 8-1, 8<sup>th</sup> Floor  
Bangunan Malaysian Re  
17 Lorong Dungun  
Damansara Heights  
50490 Kuala Lumpur, Malaysia  
Tel: (Int'l +60) 3-2093-6633  
Fax: (Int'l +60) 3-2093-2622

Form 85183-08



©2008 Dresser-Rand.  
Printed in U.S.A.

This brochure comprises a general overview of the Dresser-Rand products described herein. It is solely for informational purposes, does not represent a warranty or guarantee of the information contained herein, and is not to be construed as an offer to sell or solicitation to buy. Contact Dresser-Rand for detailed design and engineering information suitable to your specific applications. Dresser-Rand reserves the right to modify its products and related product information at any time without prior notice.