

COBEY[®]

GLOBAL ENGINEERING SOLUTIONS



COBEY ADVANTAGE



Partnering with Cobey for your packaging and assembly needs gives **you** the advantage. Involvement in creating industry standards, has provided Cobey with the expert knowledge for full compliance with your end user's specifications.

COBEY FACILITY

ENGINEERING

- Full Staff of Mechanical, Electrical, Project and Quality Control Engineers
- 18,000 sq. ft. Office Space
- 3-D Modeling
- Reference List including Offshore and FPSO

MANUFACTURING

- 72,000 sq. ft. Manufacturing space
- 100 Ton Crane Capacity
- ASME Certified
- Laser Alignment
- Complete Fabrication, Assembly and Test Capabilities



COBEY CAPABILITIES



Cobey's marketing, sales, application and production teams provide in-depth support. This allows **you** to focus on the core product while Cobey focuses on the details of how best to engineer, design, fabricate and assemble the final package to suit you and your customer's needs.

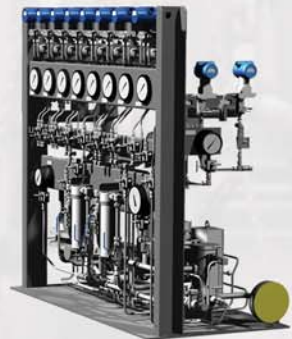
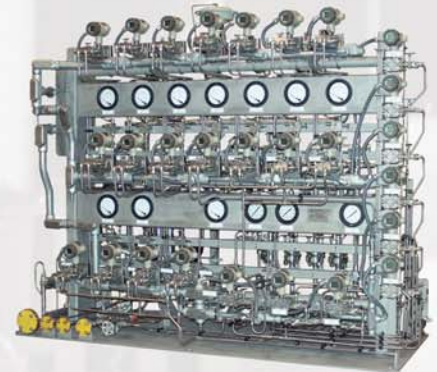
LUBE OIL SYSTEMS



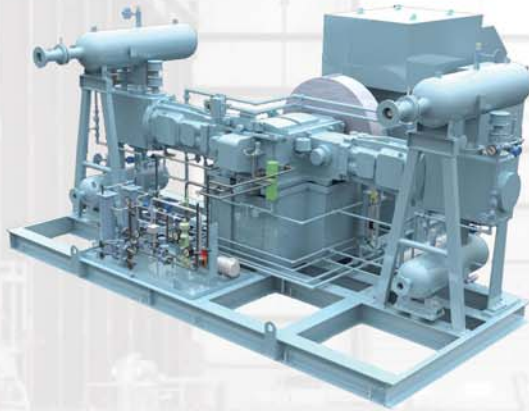
- Nearly 600 units currently in service worldwide.
- Flows from 1 GPM up to 2,000 GPM.
- API-614 4th and 5th Edition Task Force Member.
- Testing Facilities for flush and functional testing.
- Standards:
 - API-614 (ISO 10438)
 - API-618 (ISO 13707)
 - API-610 (ISO 13709)
 - API-611
 - API-672

DRY GAS SEAL PANELS

- Over 300 units currently in service worldwide.
- Pressures up to 10,000 PSIG.
- Both API and Non-API designs.
- Testing facilities for flush and functional testing.
- Alternate materials for highly corrosive and / or marine installations.



ROTATING EQUIPMENT PACKAGES



- Over 300 units currently in service worldwide.
- Full package design.
- Structural FEA.
- Laser shaft alignment.
- Extensive API experience, API-610 (ISO 13709), API-611, API-614 (ISO 10438) API-617, API-618 (ISO 13707) API-619, API-672, API-681.
- Packaging Experience:
 - In-Line Centrifugal Compressors
 - Oil-Free Screw Compressors
 - Multi-Stage Gear Compressors
 - Axial Compressors
 - Reciprocating Compressors
 - Turbo Expanders
 - Gas Engine / Generators (CHP)
 - Steam Turbines
 - Liquid-Ring Vacuum Pumps
 - Pumps

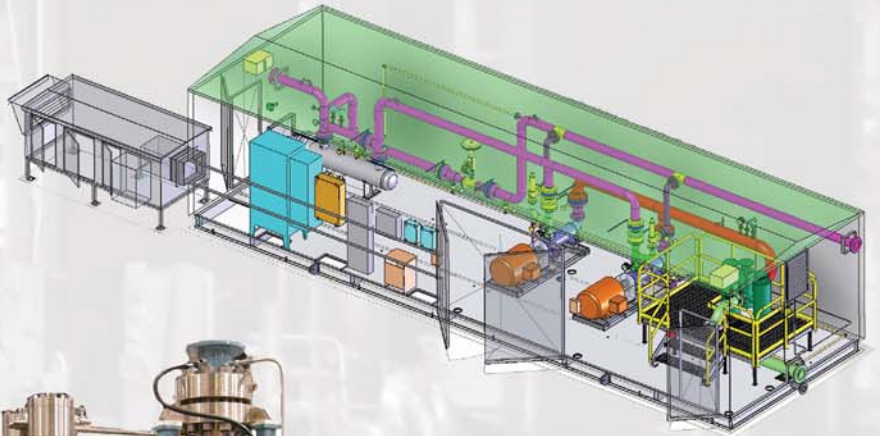
PRESSURE VESSELS

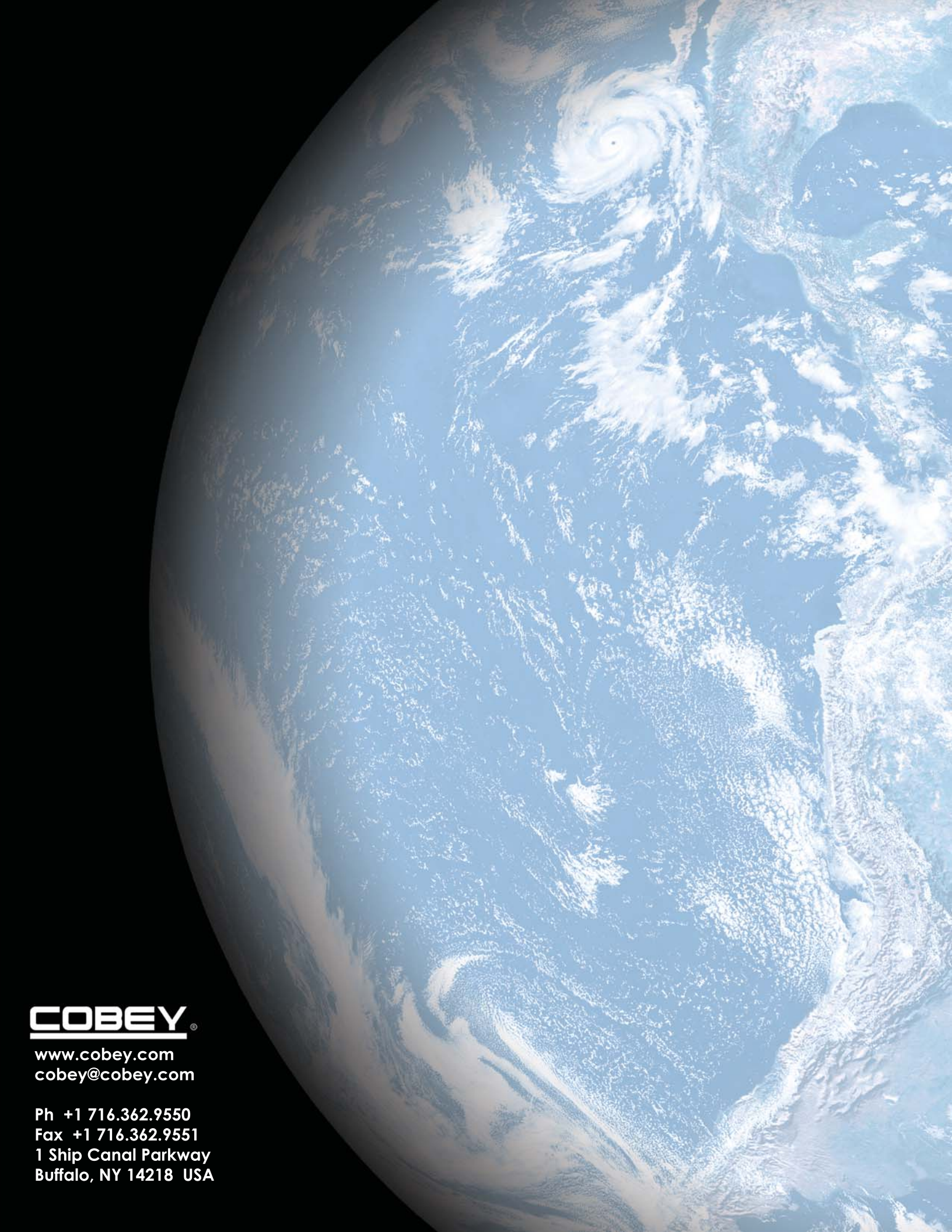


- ASME "U" and "R" Stamps, Section VIII, Division 1.
- Vessel Experience:
 - Lube Oil Coastdown Tanks
 - Seal Head Tanks
 - Pulsation Dampeners
 - Separators

AUXILIARY EQUIPMENT

- Auxiliary Equipment Experience:
 - Gas Conditioning Skids
 - Cooling Water Systems
 - Fuel Forwarding Skids
 - Fuel Injection Skids
 - Water Injection Skids





COBEY®

www.cobey.com
cobey@cobey.com

Ph +1 716.362.9550
Fax +1 716.362.9551
1 Ship Canal Parkway
Buffalo, NY 14218 USA