



MANUFACTURING FACILITY



WELDING CAPABILITIES



OFFICE FACILITY



MANUFACTURING FACILITY SHIPPING AND RECEIVING

COBEY

ONE SHIP CANAL PARKWAY
 BUFFALO, NY 14218 USA
 PH: (716) 362-9550
 FAX: (716) 362-9551
 EMAIL: COBEY@COBEY.COM
 WEB: WWW.COBEBY.COM

*"WE DON'T JUST SELL EQUIPMENT,
 WE PROVIDE ENGINEERED
 SOLUTIONS."*



COBEY INSTALLATIONS ARE LOCATED WORLDWIDE



COBEY TEAM

COBEY

ONE SHIP CANAL PARKWAY
 BUFFALO, NY 14218 USA
 PH: (716) 362-9550 FAX: (716) 362-9551
 WEB: WWW.COBEBY.COM



LUBE OIL CONSOLES



COMPRESSOR PACKAGES



GAS SEAL PANELS

MANUFACTURING CAPABILITIES

- 72,000 SQ. FT. MANUFACTURING SPACE.
- 100 TON CRANE CAPACITY, WITH 35 FT. UNDER-HOOK.
- 20 FT. WIDE CAPACITY.
- LASER SHAFT ALIGNMENT
- WELDING:
 TIG, MIG, FLUX CORE, SUBMERGED ARC.
- PIPE BENDING
- SYSTEM FLUSHING AND PERFORMANCE TESTING FACILITIES



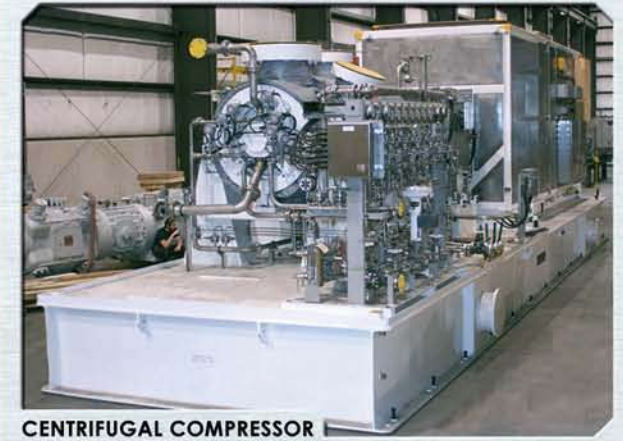
LUBE OIL CONSOLES



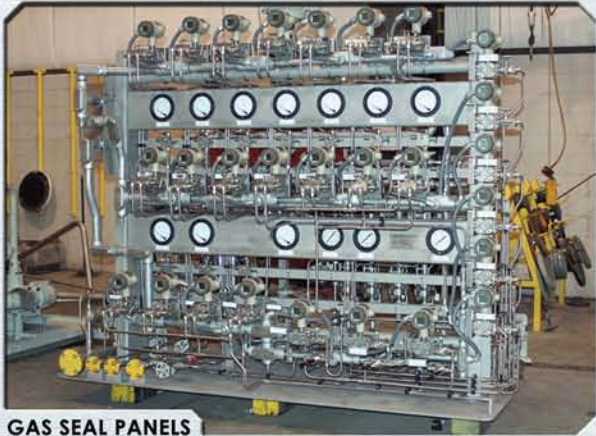
GAS PANEL MODEL



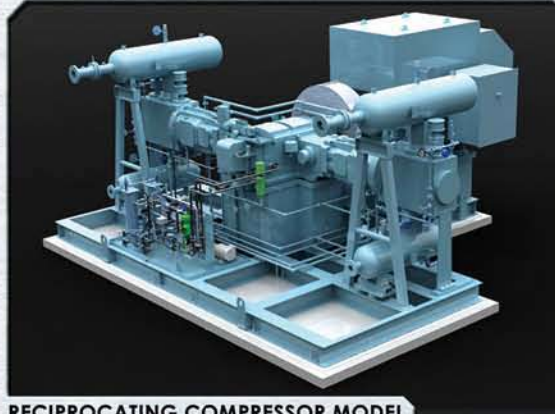
OIL CONSOLE MODEL



CENTRIFUGAL COMPRESSOR



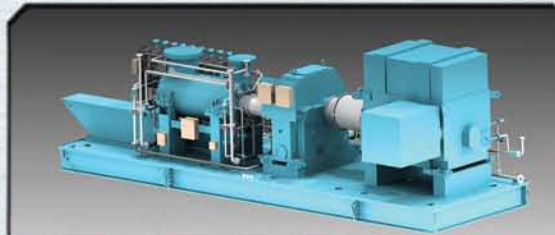
GAS SEAL PANELS



RECIPROCATING COMPRESSOR MODEL



RECIPROCATING COMPRESSOR



CENTRIFUGAL COMPRESSOR MODEL



ASME CODE VESSELS

ENGINEERING AND DESIGN CAPABILITIES

- COMPLETE PACKAGE ENGINEERING, DESIGN, FABRICATION, ASSEMBLY AND TEST.
- VESSEL DESIGN CALCULATION.
- 3-D MODELING
- 18,000 SQ. FT. OFFICE SPACE.
- STRUCTURAL FINITE ELEMENT ANALYSIS (FEA)
- DESIGNS FOR OFFSHORE INSTALLATIONS, INCLUDING FPSO
- STANDARDS:

API-614 (ISO 10438)	API-618 (ISO 13707)
API-610 (ISO 13709)	API-617
API-619	ASME CODE
ANSI B31.1/B31.3	AWS D1.1
- API-614 TASK FORCE MEMBER



SCREW COMPRESSOR